

# A VERY LIGHT SHOE WITH HIGH CUSHIONING EFFECT AND EXTRA FLEXIBILITY

## SWIM B0620 S1P SRC

100% METAL FREE

### SmellStop

Fabric lining with **permanent** antibacterial treatment against bacteria and bad odors caused by moisture

**Padded collar** to guarantee the comfort and avoid tendon inflammation

Adjustable Velcro insert

3D hi-tech fabric and **suede** leather upper

### SlimCap

### Fresh'n Flex

✓ **Metal free**: lighter and more flexible

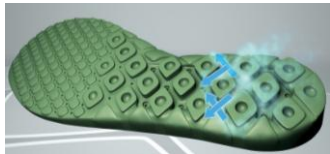
✓ Puncture resistance

**Perforation 0 mm**

**New standard 20345:2011**

(Nail 4,5mm - 1100Newton).

- **Metal free** toe-cap = lighter
- The cap's thickness is reduced to 6,5 mm
- Equipped with a pre-shaped protective bend to avoid the risk of accidental detachment
- 35% less weight



**AirTech®** tpu-SKIN®

### ANTI -FATIGUE SOLE WITH CUSHIONING EFFECT

Anatomic removable footbed with **air circulation**  
Footbed combined with Dry'n Air which is provided with a system of ducts and holes.

**Results:** High breathability which keeps the foot dry and rested.

An exclusive technology, which allows to reduce the outsole's thickness (the hardest and heaviest part) into a thin layer of some tenths of millimeter, called TPU Skin.

By increasing the midsole's thickness (the lightest and softest layer) through the air-tech technology, we obtain one of the most flexible and anti fatigue sole (**higher cushioning effect**).

**More flexibility** and less pressure on the metatarsal, which allows to walk like on a soft carpet.

**BASE**  
PROTECTION  
comfortable safety shoes

**B0620 S1P SRC Available sizes 39 - 47**